



**PRODUCT
CATALOGUE
2023**

**www.nhfishing.cn
18763123151**



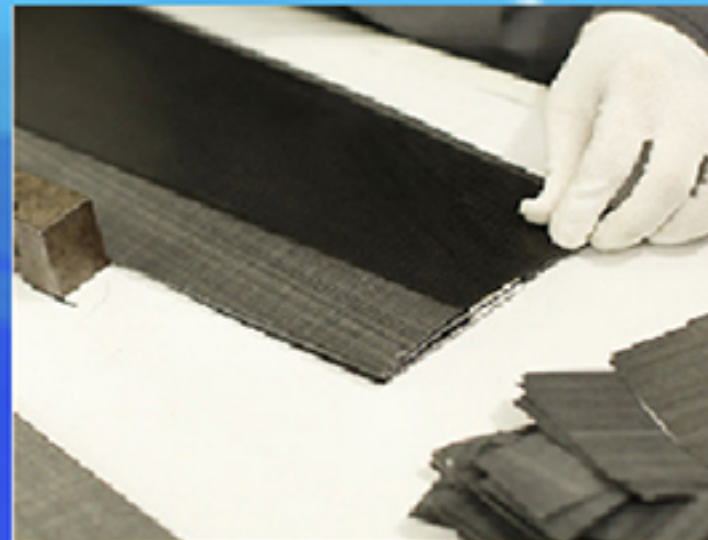
About us

Thank you for visiting Wei Hai NH New Material Technology Co.Ltd, which has a long history of fishing tackle OEM processing more than 15 years and set up its own factory in 2015.

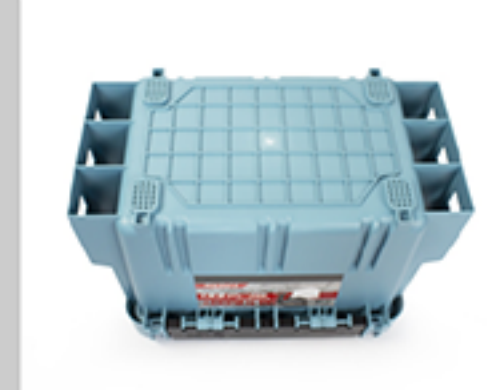
As a result of satisfaction of many customers with high quality and affordable prices , NH was selected as one of the top export company in 2018. NH is confident that it can satisfy the customer's need because of its high level technology and development in accordance with global market trends.

In the future , we would constantly strive to become the best fishing company with endless development. NH will continuously invest R&D, engineering and facility to meet fast growing fishing market trend and expectation of customers. We are seeking for more opportunities to grow our business and welcome for all the communications to cooperation.

Fishing Rod Production Line



TACKLE BOX & ACCESSORIES



EGI/SQUID JIGS/METAL JIGS



EGI Squid Jigs

1.5# 2.0# 2.5# 3.0#



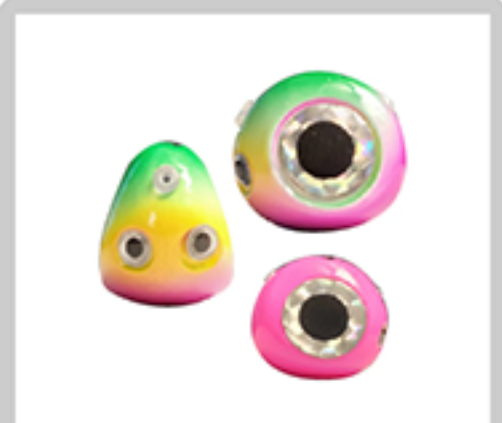
Luminous PVC Metal Jigs

8# 10# 12# 14# 16# 20#
25# 30# 35# 40# 45# 50#



Metal Jigs.

230g 280g



TIE-RUBBER HEADS.

40g 50g 60g 70g 80g
100g 120g 150g 180g 200g

S862ML INSHORE ROD

A01



Model	Length (m)	Section	Top Dia (mm)	Butt Dia (mm)	Lure Weight (g)	PE Line	Rod Weight	Carbon (%)
A01	2.58	2	1.9	11.6	8-30	0.8-1.5	113	98

S832M/ S832ML EGING ROD

A02



A03



Model	Length (m)	Section	Top Dia (mm)	Butt Dia (mm)	Lure Weight (g)	PE Line	Rod Weight	Carbon (%)
A02	2.51	2	1.5	13.4	EG1.5-3.5	0.5-1.0	110	98
A03	2.51	2	1.8	10.6	30-150	0.5-1.0	105	98

S762 /S792 2 TOPS ROCKFISH ROD

A04



A05



Model	Length (m)	Section	Top Dia (mm)	Butt Dia (mm)	Lure Weight (g)	PE Line	Rod Weight	Carbon (%)
A04	2.30	2	1.0	11.4	1-10	0.5-1.0	126	98
A05	2.37	2	1.0	11.5	1-10	0.5-1.0	134	98

NH NEW PRODUCT 150 /160



	Model	Length (m)	Section	Top Dia (mm)	Butt Dia (mm)	Lure Weight (g)	PE Line	Rod Weight	Carbon (%)
A06	150	1.50	2	1.0	8.0	30-120	0.6-1.2	84	98
A07	160	1.60	2	1.0	8.0	30-120	0.6-1.2	75	98

TITANIUM TIPS 140 /150



	Model	Length (m)	Section	Top Dia (mm)	Butt Dia (mm)	Lure Weight (g)	PE Line	Rod Weight	Carbon (%)
A08	1.40	1.40	1	1.0	7.2	Max150	0.6-1.0	70.0	98
A09	1.50	1.50	1	1.0	7.0	Max150	0.6-1.0	73.5	98

551 JIGGING ROD



	Model	Length (m)	Section	Top Dia (mm)	Butt Dia (mm)	Lure Weight (g)	PE Line	Rod Weight	Carbon (%)
A10	C551ML	1.65	1	3.0	9.0	60-200	4.0	235	98

FEEDER ROD



	Model	Length (m)	C.Length (m)	Section	Top Dia (mm)	Butt Dia (mm)	Lure Weight (g)	Rod Weight	Carbon (%)
A11	10ft	3.0	1.55	2	1.5	12.5	60	210	98
A11	11ft	3.3	1.70	2	1.5	12.8	70	223	98
A11	12ft	3.6	1.84	2	1.5	15.0	100	256	98
A11	13 ft	3.9	1.35	2	1.5	15.5	130	325	98

S832 POPPING ROD

A12



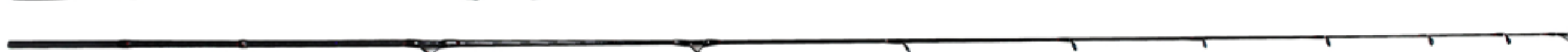
	Model	Length (m)	Section	Top Dia (mm)	Butt Dia (mm)	Lure Weight (g)	PE Line	Rod Weight	Carbon (%)
A12	2.52	1.84	2	3.0	17.0	Max 36	4.0-5.0	428	98

CARBON SOLID JIGGING ROD

A13



A14



	Model	Length (m)	Section	Top Dia (mm)	Butt Dia (mm)	Lure Weight (g)	PE Line	Rod Weight	Carbon (%)
A13	C180	1.8	2	1.8	14.8	40-60	1.0-2.5	139	98
A14	S180	1.8	2	2.0	14.8	40-60	1.0-2.5	152	98

ISO ROD

A15



	Model	Length (m)	Section	Top Dia (mm)	Butt Dia (mm)	Lure Weight (호)	PE Line	Rod Weight	Carbon (%)
A15	1.0-500	1.12	5	1.0	17.0	1.0-5.0	1.5-5.0	200	98
A15	1.7-500	1.12	5	1.0	17.0	1.0-5.0	1.5-5.0	230	98

SURF ROD with LED LIGHT

A16



A16



	Model	Length (m)	CLength (m)	Section	Top Dia (mm)	Butt Dia (mm)	Rod Weight	Carbon (%)
A16	4204	4.20	1.16	4	3.1	20.9	462	98
A16	4504	4.50	1.23	4	3.1	20.9	477	98
A16	5005	5.00	1.15	5	3.1	24.2	541	98
A16	5305	5.30	1.18	5	3.1	25.0	586	98



BAITCASING REEL -001

Weight	Gear Ratio	Drag Power	Line Capacity
200g	6.4:1	5kg	8lbs/210yds 12lbs/165yds 15lbs/155yds



BAITCASING REEL -002

Weight	Gear Ratio	Bearing	Drag Power	Line Capacity
193g	6.4:1	10+1	10kg	6lbs/200yds 9lbs/160yds 12lbs/140yds



BAITCASING REEL -003

Weight	Gear Ratio	Material	Drag Power	Line Capacity (mm/m)
155g	8.1:1	Aluminum alloy	10kg	0.205/140 0.235/105 0.250/195



BAITCASING REEL -004

Weight	Gear Ratio	Bearing	Drag Power	Line Capacity
200g	7.0:1	10+1	10kg	12lbs/100yds



BAITCASING REEL -005

Weight	Gear Ratio	Bearing	Drag Power	Line Capacity (mm/m)
211g	7.3:1	11+1	8kg	0.33/100 0.38/90



BAITCASING REEL -006

Weight	Gear Ratio	Bearing	Drag Power	Line Capacity (mm/m)
165g	4.8: 1	6+1	10kg	0.205/140
	5.3: 1			0.235/105
	6:4: 1			0.250 / 95
	7:2: 1			



BAITCASING REEL -007

Weight	Gear Ratio	Bearing	Drag Power	Line Capacity (mm/m)
217g	8.0:1	6+1	5kg	0.28/150 0.33/115



SPINNING REEL-001

Weight	Gear Ratio	Bearing	Drag Power	Line Capacity (mm/m)
253g	5.2: 1	8+1	8kg	0.2/75



SPINNING REEL-002

Weight	Gear Ratio	Bearing	Drag Power	Line Capacity (mm/m)
281g	5.2:1	3+1	5kg	0.3/195 0.35/145 0.4/110



SPINNING REEL-003

Weight	Gear Ratio	Bearing	Drag Power	Line Capacity
437g	6.2: 1	8+1	13kg	8lb/300yds 10lb/250yds 12lb/185yds



SPINNING REEL-004

Weight	Gear Ratio	Bearing	Drag Power	Line Capacity (mm/m)
217g	5.2:1	7+1	18kg	8/100 10/115 12/110



SPINNING REEL-005

Weight	Gear Ratio	Bearing	Drag Power	Line Capacity (mm/m)
246g	5.2: 1	7+1	8kg	0.2/230 0.23/170 0.28/110